

# NATE KATSUKI

Born and raised in Boise, Idaho, Nate was discovered in New York City and quickly began working with popular commercial and fashion brands including Christian Louboutin, Converse, and Citizen Watches. He has since worked for a multitude of brands appearing in campaigns, lookbooks, and other work. Nate is set to appear as a recurring character in the new Netflix series JIGSAW.

[hello@katsuki.com](mailto:hello@katsuki.com)

[@natekatsuki](#)

[www.katsuki.com](http://www.katsuki.com)

5' 11" · 38R · 15X32 · 31X32 · 10.5 US · BROWN · BROWN





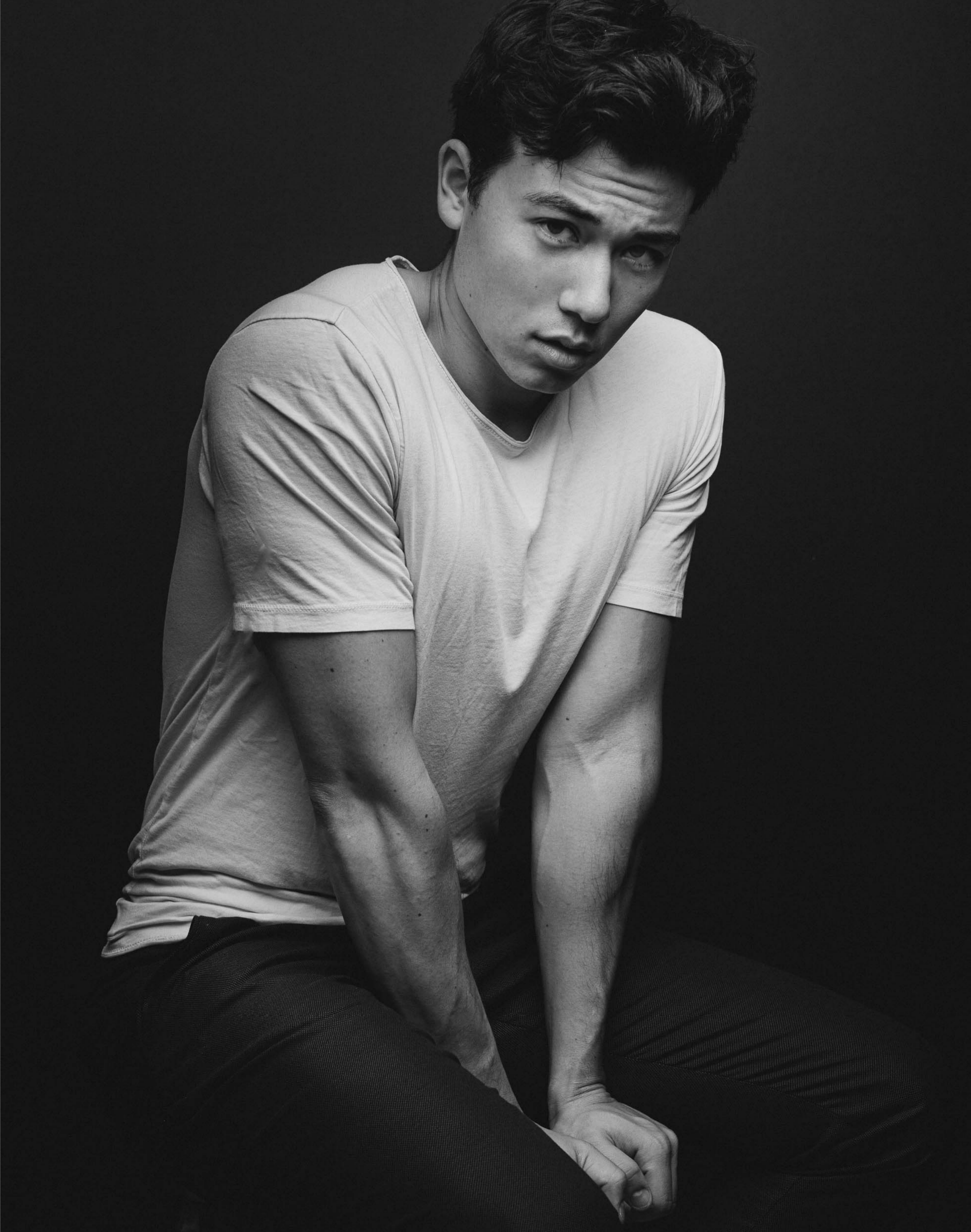




















Handwritten signature or logo in white ink, possibly reading "Anthony".